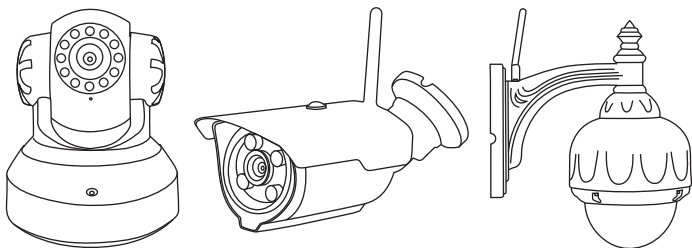


ifcamPC Manual



Configure and Watch live videos using ifcamPC

www.videoipcamera.com

1. What you can do with ifcamPC

The ifcamPC is the free software used on Microsoft Windows 7, 8, or 10 PC. ifcamPC lets you:

- Access the cameras via LAN or WAN (locally via a Local Area Network or remotely via a Wide Area Network).
- Watch live video streams from more than one camera in the same time.
- Record and save live videos on your PC.
- Watch or transfer video files from Sricam's built-in micro SD card to your PC
- Configure the ifcam device's network and micro SD card settings.

Note: To update the camera's configuration (e.g., turning on and off the alarm or updating the camera's password) use the ifcam App on your smart phone.

This article includes the following sections.

1. What you can do with ifcamPC.
2. Requirements for using ifcamPC.
3. Download and Install the ifcamPC.
4. Watch local access live videos from ifcamPC(LAN).
5. Changing the image/video save folder.
6. PTZ controls.
7. Playback.
8. Configuring network and micro SD.
9. Watch remote access live videos from ifcamPC(WAN).

2. Requirements for using ifcamPC

Make sure the following requirements are met:

- Windows 7/8/10 is running on this PC.
- Your camera has successfully set up and is connecting to the Internet.
- The PC has the Internet access.

Note: When the PC and cameras are on the same LAN, Internet access is not mandatory.

- You have your camera ID and camera password.

Note: There are two ways to access your camera from a laptop or desktop PC: local access or remote access.

Local Access (LAN): When your camera and computer or laptop device is connected to the same network, login with default UserName "admin" and default password "admin".

Remote Access (WAN): When the network outside of your home or business network (e.g., coffee shop, work computer, etc.) a free account is required to watch live video.

3. Download and Install the ifcamPC

Download ifcamPC from: videoipcamera.com/Manual/ifcamPC.exe

Once installed, the following icon will be displayed on the PC's desktop:

Note: As to Windows 10 system, need install and run the "ifcamPC" as administrator.



4. Watch local access live videos from ifcamPC (LAN)

Note :For watch remote access live videos from ifcamPC(WAN), Please go to Section 9.

Running ifcamPC, then login to the window shown in Figure 1 with default UserName “admin” and default password “admin” bring ups the ifcamPC main control window shown in Figure 2.

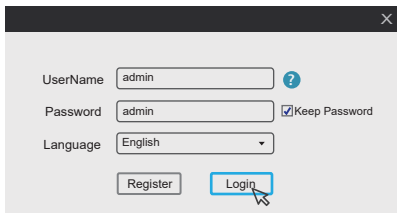


Figure 1 Login Window

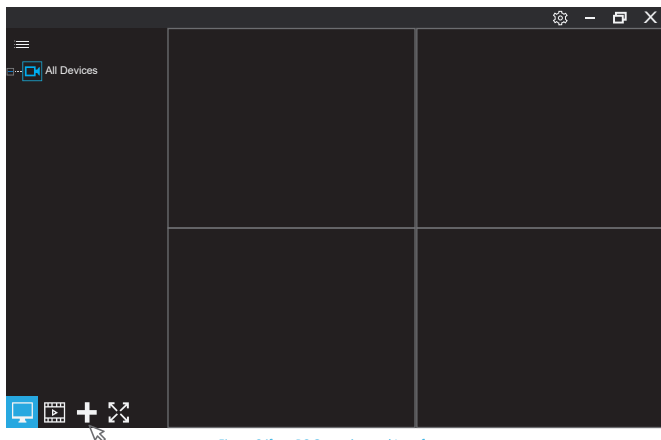



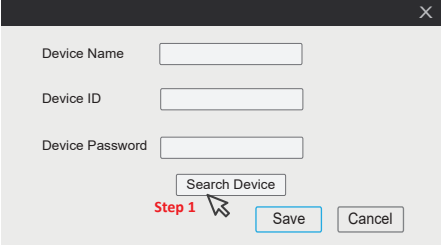
Figure 2 ifcamPC Operation and Interface

Click the  “add device” button. The window shown in Figure 3 will pop up.

There are two ways to add the device:

Method 1: Click “search Device ”button and the camera can be detected as Figure 4. Double-click to select the camera, then enter your camera password and click “Save” button as Figure 5.

Note: If the camera can't be detected you can try to disable your PC's firewall. Some PC have the capability to automatically detect cameras on the same LAN. But due to you router's configuration the auto detection cannot be guaranteed. you can also manual add the camera as **method 2**.



Device Name

Device ID

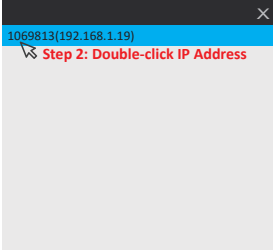
Device Password

Search Device

Step 1

Save Cancel

Figure 3 Add Device Window



1069813(192.168.1.19)

Step 2: Double-click IP Address

Figure 4 Camera Selection Window



Device Name

Device ID

Device Password

Step 3: Enter the camera password

Search Device

Step 4

Save Cancel

Figure 5 Completing the Add Device Window

Method 2: Manual enter the “Device Name ”, “Devide ID” and “Device Password”as Figure 6.

Note: If run ifcam App on your smart phone, the camera's IP address can be displayed by tap “Settings”then go to “Network Setting”.

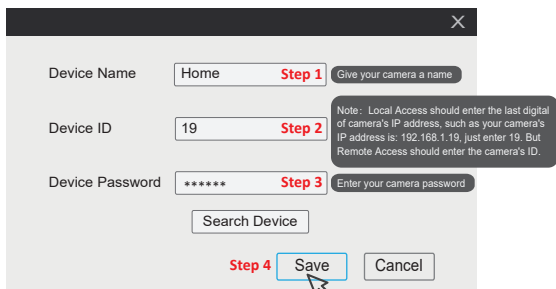


Figure 6 Completing the Add Device Window

The camera will be displayed in the “All Device” list in a window as shown in Figure 7.

Double-click the  Home camera icon to watch the live video.



Figure 7 Live Video

More information for the buttons:

- HD** Changes the resolution between HD, SD and LD.
- Enables or disables audio input to the camera(This feature is not available on outdoor cameras).
- Enables or disables audio output from the camera(This feature is not available on outdoor cameras).
- Manually records video. The video is saved at the path: C:\program Files\ifcamPC\RecordFiles.
- Captures a screenshot of the live video feed. The picture is saved at the path: C:\program Files\ifcamPC\Pictures.
- Closes the video session.

5. Changing the image/video save folder

Changing the file destination for saved image and video files is simple.

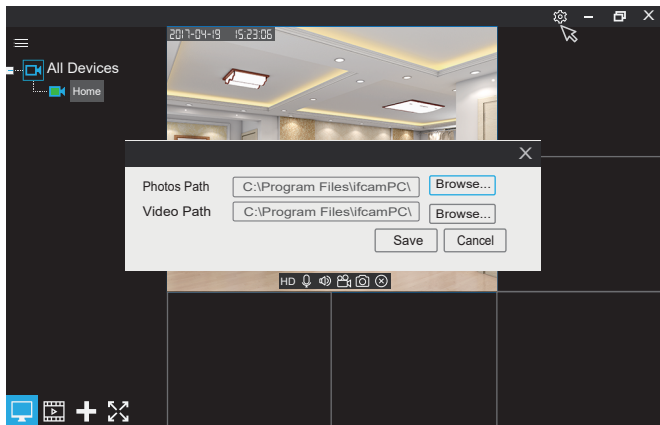



Figure 8 Path tab

Click the  setting (shown at the top right corner of the window in Figure 8). A configuration window will pop up as shown. Click the Photo Path or Video Path “Browse” button to browse and choose an alternate folder.

6. PTZ controls

Right-click on a camera’s display window to pop up the Pan, Tilt and Zoom (PTZ) controls.

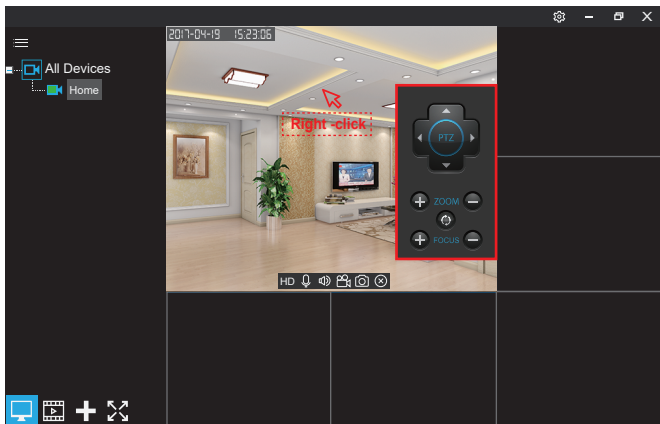


Figure 9 PTZ Control Window

The PTZ control buttons are shown in Figure 9 and used as follows:

- Pan & Tilt : up, down, left, right.
- Zoom & Focus: “+” and “-” buttons zoom and focus in and out. They only work for model SP008.
- “Zoom reset” button: If the video is not clear, click this icon to reset the factory defaults. This only works for model SP008.

7. Playback

The playback function allows files to be selected and played. The left side of the screen lists the source, type and names of files that can be played back. Click the file name to select the desired file.

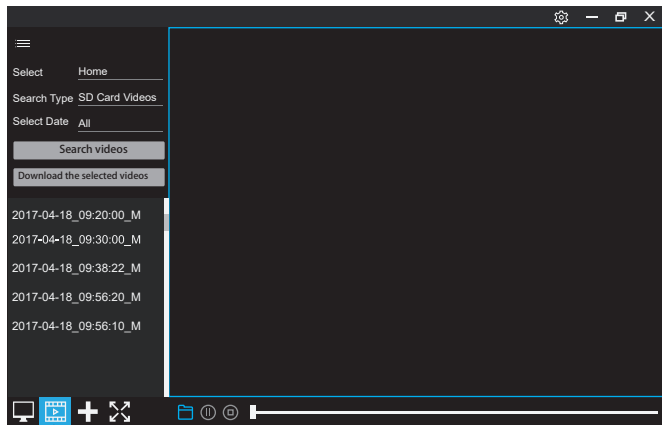


Figure 10 Playback

Clicking the  “Playback” button allows the user to:

- Playback the camera’s recorded video in a local PC.
- Play the recorded videos stored in the micro SD memory card.
- Download files recorded on the micro SD to the local PC.

8. Configuring network and micro SD

To configure network and micro SD memory, right-click on the appropriate device listed on the left-hand frame in Figure 10 to open a drop down menu. Then Right-click the “Device Parameter Setting”.

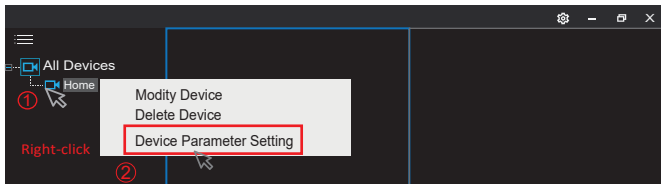


Figure 11 Device Parameter Setting

The window shown in Figure 12 will pop up. You can configure the camera's IP address, Wi-Fi network, micro SD card record here.

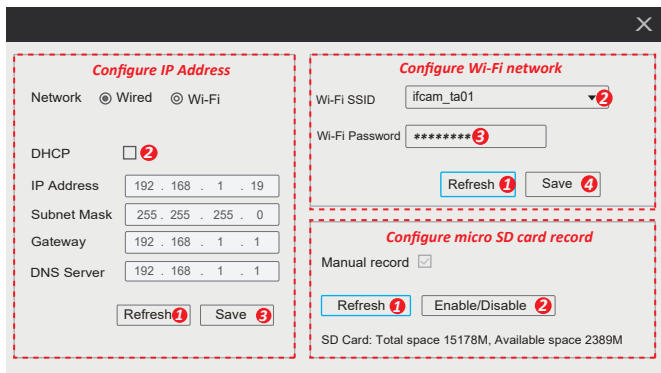


Figure 12 Device parameter setting Window

- **Configure IP Address.**
Click "Refresh" button, the camera's IP address information will be listed. Disable the DHCP, you can update the camera's IP address.
- **Configure Wi-Fi network**
Click "Refresh" button, the available Wi-Fi network SSID will be listed, select your Wi-Fi SSID and input the Wi-Fi password, click "Save" to finish. Wait for one minute, the camera will be connected to Wi-Fi network.

- Configure micro SD card record
Click “Refresh” button, the camera's micro SD card information will be listed. You can enable or disable micro SD card record here.
Note: For motion detection alarm record or timing record setting, please use the smart phone ifcam App.

9. Watch remote access live videos from ifcamPC (WAN)

When using a network outside of your home or business (e.g., coffee shop, work computer, etc.) to watch live video, a free registered account is required. A separate account is required for each ifcamPC or smart phone application. To register for a new account, use the “Register” button in the login window shown in Figure 13.

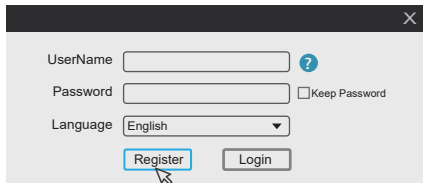


Figure 13 Login Window

Register an APP User Account:

Step 1: Click on the “Register” button. It will pop up an account login screen.

Step 2: Enter a new password (twice) and click on “Next”.

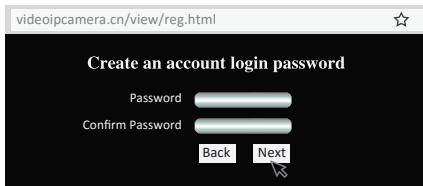


Figure 14 Enter New Password

Step 3: Enter your email ID and click “Next”.

NOTE: Both ifcamPC and Sricam Smart Phone App needs a separate App account, therefore, if the email ID is used for registered on your Smart Phone App before, then cannot be used.

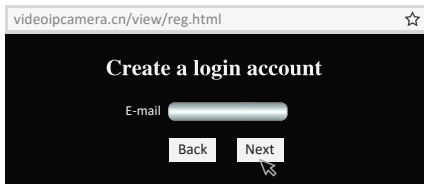


Figure 15 Enter New Password

Step 4: Your new account ID will be displayed in the popup window. It will begin with zero. This ID is the ifamPC 's UserName.

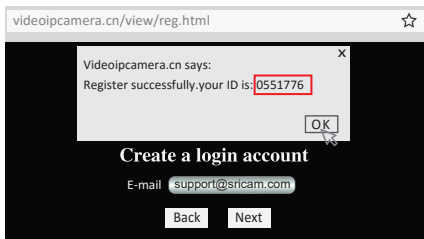


Figure 16 Account ID

Step 5: Enter your UserName and password. Then click "Login".

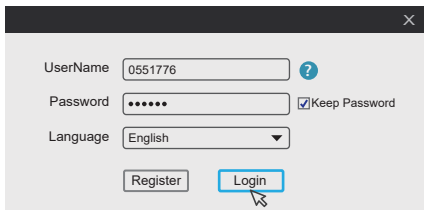


Figure 17 Login Window

Add the camera on ifcamPC: Click , “Add Device” button as shown in Figure 17 and enter your camera’s setup information.

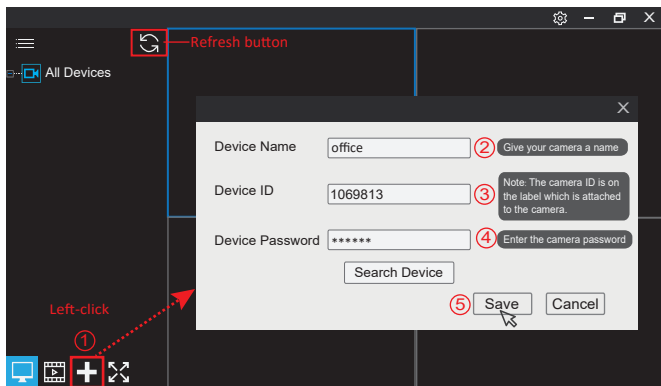


Figure 18 Add Device Screen

Device Name: Give your camera a name, such as “Home” or “Office”.

Device ID: Enter camera ID, you can find the camera ID on the label which is attached to the camera.

Device Password: Enter your camera password, then click “Save”.

The only difference between Local Access (LAN) and Remote Access (WAN) on ifcamPC:

- Login account :Local Access (LAN) login with default UserName “admin” and default password “admin”. Remote Access (WAN) login with APP account or email ID
- Add device operation :Local Access should enter the last digital of camera’s IP address, Remote Access should enter the camera’s ID.
- Refresh button:Remote Access(WAN) have a refresh button on the top left corner as Figure 18.

Other operations on ifcamPC are the same.

More FAQs:

1. How to watch live streams with ONVIF clients, such as iSpy, Synology, blueiris.
2. ifcamPC’s button no text issue.
3. Camera ID, Camera Password, App Account ID and Password issue.
4. How to restore the camera to factory settings.
5. ifcamPC without live video issue.

Please visit: www.videoipcamera.com